



e-TOLL GETTING STARTED

E-TOLL CARD - A prepaid electronic card that allows vehicles to utilize the card as a cashless form of payment at Toll Plazas and Weighbridges. Toll Transactions are then deducted from your prepaid account using a Point of Sale Terminal. The eToll Card can only be used with the vehicle bearing the same number plate printed on the card

E-TOLL LOCATIONS

eToll is accepted at all NRFA Toll Plazas and Weighbridges Operating as Toll Plazas

****eToll is not accepted at Border Points of Entry operated by the RTSA**

HOW TO PAY YOUR TOLL WITH an E-TOLL CARD

1. Give your e-Toll Card to the Toll Attendant. The attendant will swipe the card against a POS machine
2. Wait for your card to be returned along with a receipt. Keep your receipt for reference purposes.
3. The transaction is now complete

If you have an eToll Card and it belongs to the appropriate vehicle. Never Give the Attendant CASH. If for any reason the terminal is down or the card is failing to scan, there are various measures in place to process the cashless toll manually.

PAYMENT MANAGEMENT

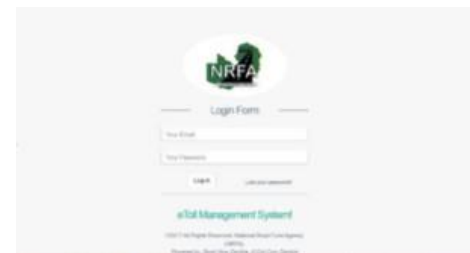
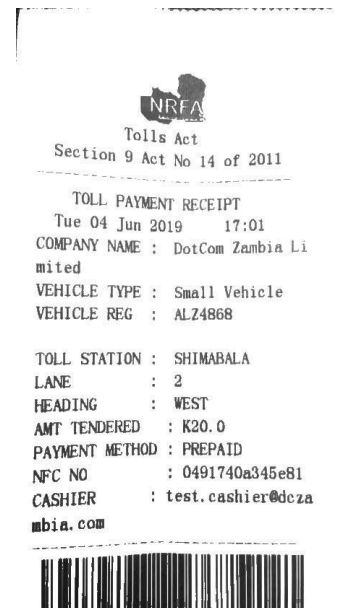
Your Toll Account is pre-paid. Each time an eToll Card is used, the corresponding Toll charge will be debited from your account. Once your account balance reduces to the stipulated threshold (of 20%), a top up is required. Payments for tolls and fees are to be conducted through Book Now Zambia Ltd by cheque or electronic bank transfer to:

Account Name :BOOK NOW ZAMBIA LIMITED
 Account Number: 62560754931 (ZMW)
 Bank Name : First National Bank (FNB)
 Branch Number:260014 (Acacia Park)

MANAGEMENT REPORTING

www.etollzambia.com, is the web portal hosting your account online. You can use the portal to access account information, generate reports, and view business information such as transaction history and current balance.

IMPORTANT: Road Tolling is operated by the National Road Fund Agency. Terms and Conditions may change as directed by this Body. Please see your Terms of Use



eTOLL at a Glance (as of 31/5/2019)

March 1, 2017 Date of Inception
5000 Cards In Use
100 Number of Clients
over 600,000 Transactions Processed

BOOK NOW ZAMBIA

(For general questions, e-Toll card requests, lost card replacement)

RELATIONSHIP MANAGER: MAWANO KAMBEU (0974-472128)